



OPERATION DE MAINTENANCE

PRODUIT	NEPTUNE
COMPOSANT	Carte électronique
Date : 13/06/2019	Rédacteur : Lionel FACON

Type d'appareil : HAIR DRYER

Désignation : NEPTUNE



Maintenance operation

CHANGE OF PC BOARD

Tools required :

- cross-head screw
- Needle-nose pliers

**FIRST THING FIRST
SWITCH OFF THE ELECTRONIC DEVICES**



OPERATION DE MAINTENANCE

PRODUIT	NEPTUNE
COMPOSANT	Carte électronique
Date : 13/06/2019	Rédacteur : Lionel FACON

Hair dryer can stay on the wall.
Open the cover.

Remove the 4 screws from the cover.



Remove the cover to the top



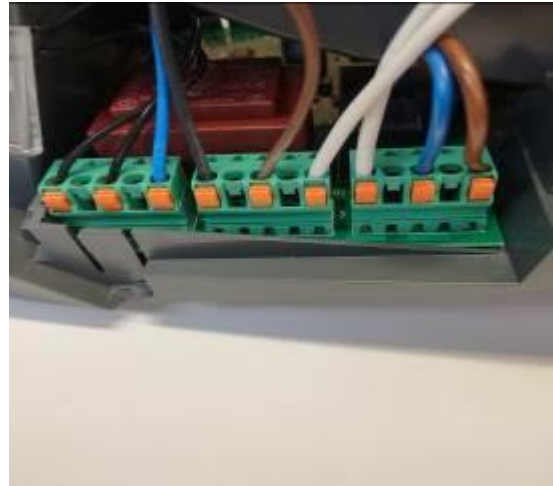


OPERATION DE MAINTENANCE

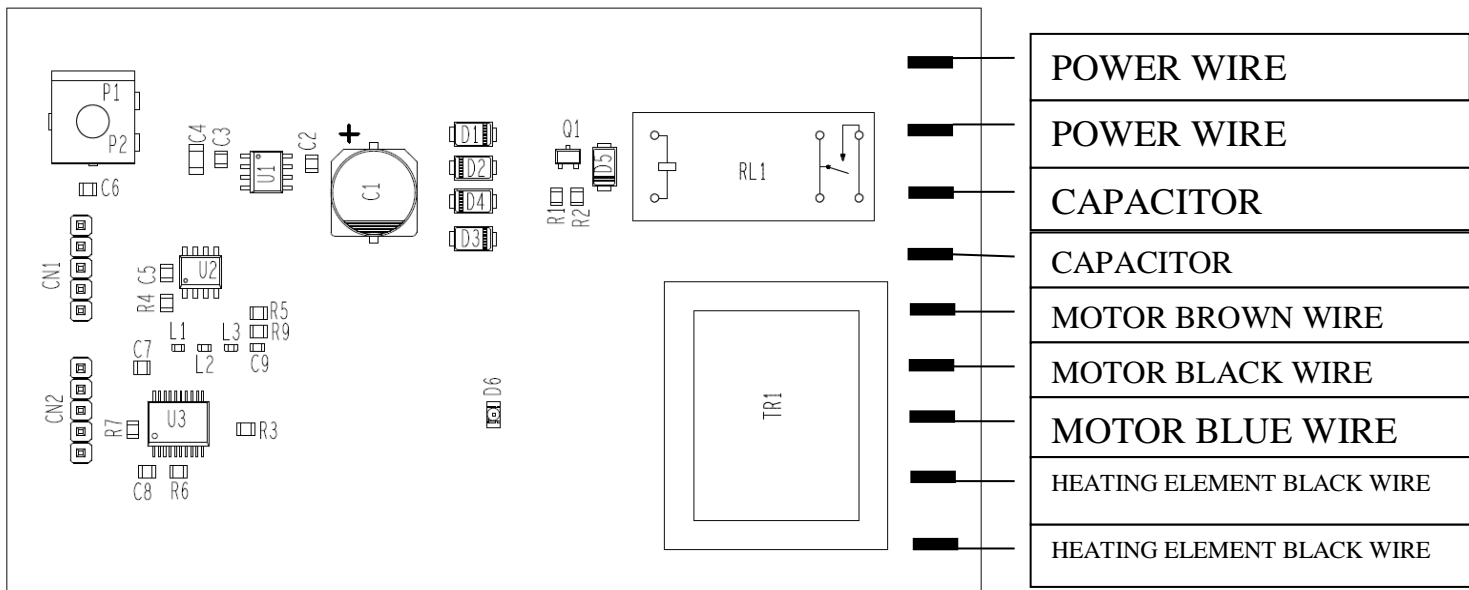
PRODUIT	NEPTUNE
COMPOSANT	Carte électronique
Date : 13/06/2019	Rédacteur : Lionel FACON

Disconnect the PCBoard by pushing on orange buttons from top to bottom.

Remove the PCB.



Reconnect the PC board



No polarity on the power wires.

No polarity on the white wires of capacitor.

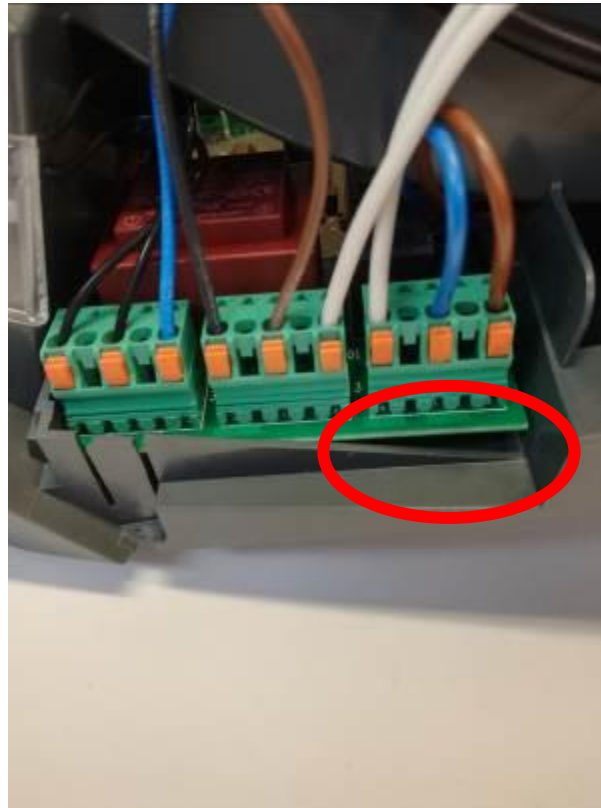
No polarity on the black wires of heating element.



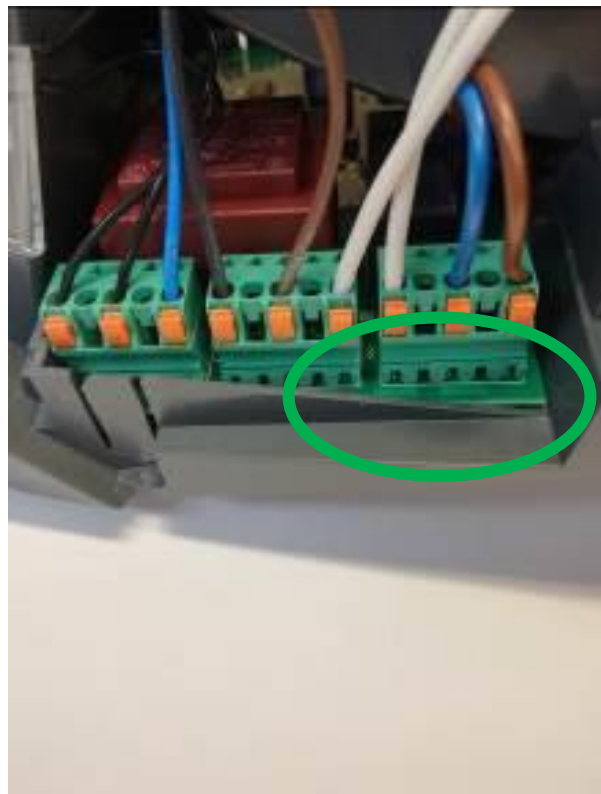
OPERATION DE MAINTENANCE

PRODUIT	NEPTUNE
COMPOSANT	Carte électronique
Date : 13/06/2019	Rédacteur : Lionel FACON

Non-compliant position
NOK



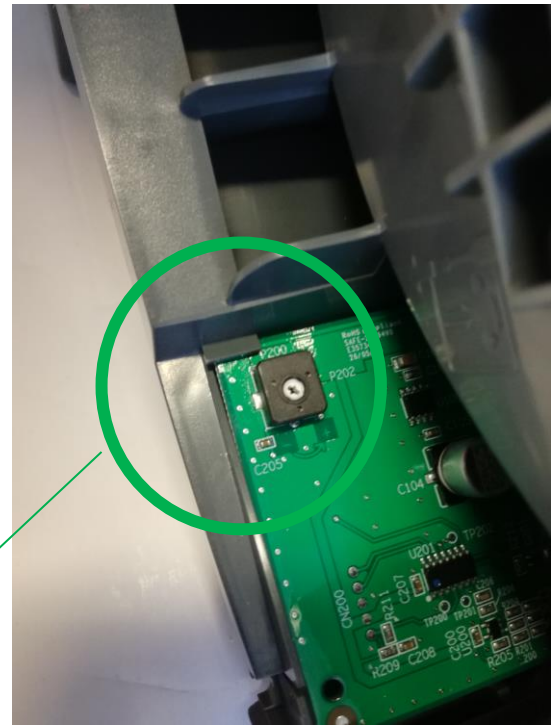
Compliant position
OK



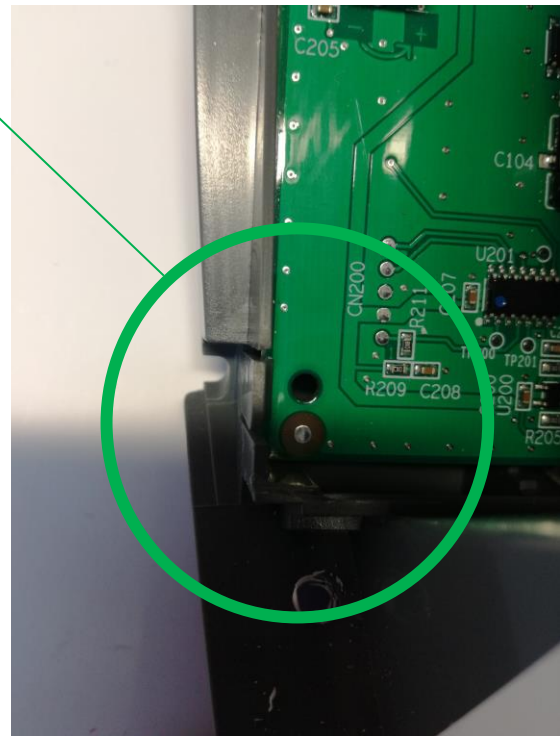


OPERATION DE MAINTENANCE

PRODUIT	NEPTUNE
COMPOSANT	Carte électronique
Date : 13/06/2019	Rédacteur : Lionel FACON



COMPLIANT POSITION
OK



Put back the cover on the hairdryer